



# *Deermaa Paradise*

— Kamothe - Navi Mumbai —



Where you'll experience a royal life



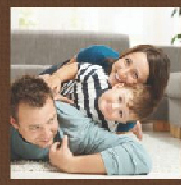






*Veermaa Paradise*  
Ramesh Road, Mumbai

PROJECT



- Clean title CDDCO transfer plot
- G+1/3 Storey Residential cum Commercial project
- Shops, 1 BHK & 2BHK Flats
- Quality construction with earthquake resistance RCC structure
- Spacious and decorative entrance lobby with flooring in Marble
- Ample ground & Podium 1st level car parking
- High Tech fire-fighting system
- Exclusive high-speed lifts
- Loans available & approved by major financial institutions & banks

Veermaa Paradise a piece of architectural brilliance designed to achieve luxury and able to satisfy every need of aspiring families.

Well planned composition of flats justifies the area and presents beautiful living spaces. The user friendly design justifies the planning techniques that caters the needs of today's ever demanding persons. The time you'll spend here will become the greatest moment of your life that will also help you to relieve, relax & evoke a great sense of happiness. This place is surrounded with expediencies, making life easy and full of comfort. Veermaa Paradise braces the comforts in the form of luxurious amenities and facilities that would definitely make this place first choice of aspiring families.



*Veermaa Paradise*  
— Kamothe - Navi Mumbai —

#### LOCATION



- 5 Minutes from Mumbai - Pune Express Highway
- 5 Minutes drive to Mansarwar Railway Station
- 10 Minutes walking distance to Khandeshwar Railway Station
- 10 Minutes drive to Navi Mumbai International Airport
- 15 Minutes drive to proposed Navi Mumbai SEZ
- Degree College, Schools, Hospitals, Play Ground, Shopping Malls, Multiplexes & Other Entertainment Zone in close vicinity

Today we are living in a fast-paced life, where life demands fast access to everything. Excellent connectivity through the rail & road mediums plays an important role in our life by saving our lot of travelling time. Veermaa Paradise located at Kamothe, presents beautiful opportunities by putting everything within a circle. And many futuristic developments like SEZ, International Airport, Metro Rail and many more would enhance the value of property in the near future. This place that offers absolute peace to the residents.



*Deermata Paradise*  
— Kamoche - Near Mumbai —

## AMENITIES

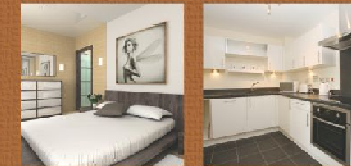


- Fitness Centre
- Children Play Area
- Garden
- Jogging track

Exercise is one of the oldest techniques to keep you rejuvenated and healthy. It not only gives strength and vigour and helps to keep the pace with the changing times. Our State-of-the-art gymnasium grants you with a new life and enthusiasm. Steam Room, the very natural treatment is also there that rejuvenates the tired soul of the body and gives a new meaning to live life in a better way. We know the needs of everyone and have designed rejuvenation to both mind, body and soul and gives an opportunity to life in the perfect harmony of the surroundings.



### SPECIFICATION



#### FLOORING

- The flooring in the living and rest of the spaces will be 24"X24" vitrified tiles.
- The bathroom flooring will be in designer ceramic/anti skid tiles/matt finished vitrified tiles.

#### KITCHEN

- Granite kitchen platform with Stainless Steel sink.
- Designer wall tiles upto 5ft finished floor level and Balance height POP with Emulsion paint finish.

#### DOORS

- Decorative flush door with wooden frame.

#### BATH & W.C.

- Designer glazed tiles upto upto full height.
- Branded sanitary wares fitting all bath and W.C.
- The concealed plumbing will be done CPVC fitting.
- Quality C.P. fitting of superior brands.

#### WALLS & PAINTS

- Wall putty finished internal wall.
- Plastic paints for internal walls.
- Acrylic Paints for external walls.

#### ELECTRICAL

- Concealed copper wiring with adequate electrical points.
- Branded modular switches.
- M.C.B. & E.L.C.B. circuit breakers.

#### WINDOWS

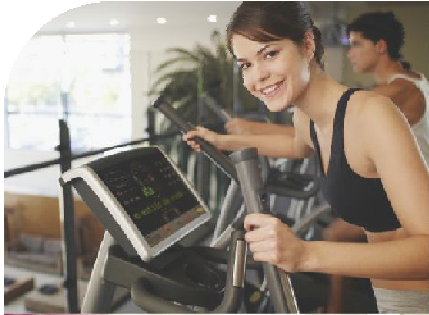
- Anodized aluminum sliding windows with tinted glass.
- Mosquito prevention net panel.

#### WATER

- Water proofing treatment.

#### BACKUP

- Standby Generator for Eff.





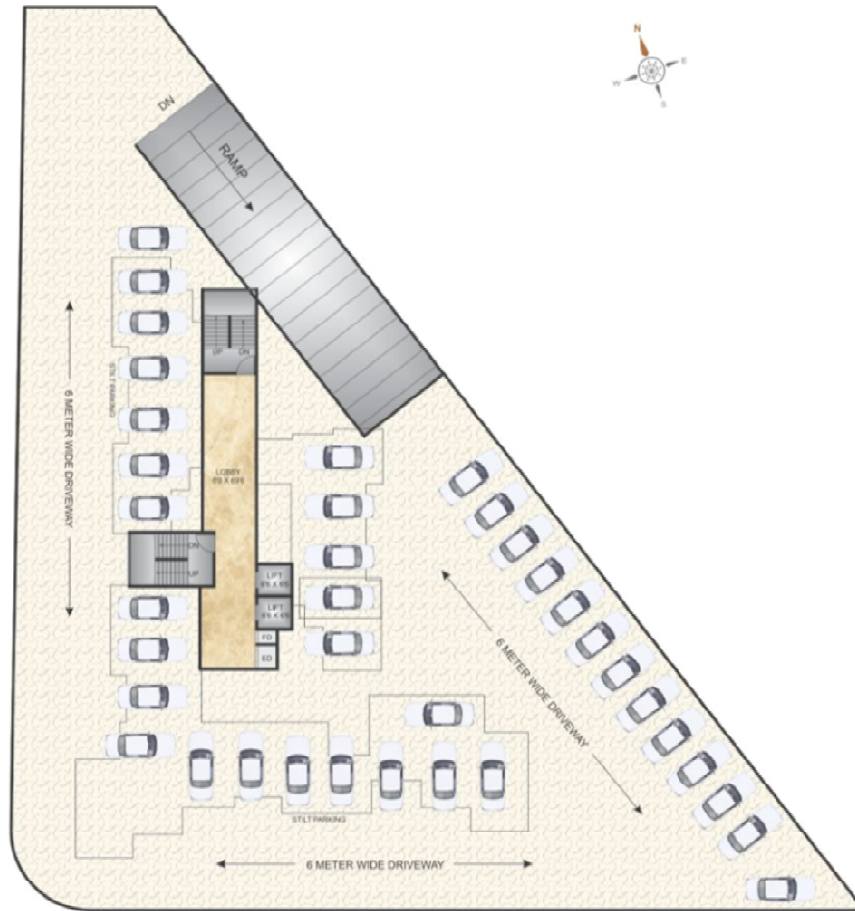
  
**Deermaa Paradise**  
 — Kamothe - Navi Mumbai —

**Ground Floor Plan**



*Deermaa Paradise*  
— Kamothe - Navi Mumbai —

First Floor Plan





  
**Deermaa Paradise**  
 — Kamathe - Navi Mumbai —

Typical Floor Plan

3rd - 5th - 7th - 9th Floor Plan



  
**Deermaa Paradise**  
 — Kamothe - Navi Mumbai —

**Typical Floor Plan**

4th - 6th - 8th - 10th Floor Plan



  
*Deermaa Paradise*  
 — Kamothe - Navi Mumbai —

Eleventh Floor Plan



  
**Deermaa Paradise**  
 — Kamothe - Navi Mumbai —

**Twelfth Floor Plan**



  
*Deermaa Paradise*  
 — Kamothe - Navi Mumbai —

Thirteenth Floor Plan





*Deermai Paradise*  
Kamathar - Navi Mumbai

1 BHK Flat

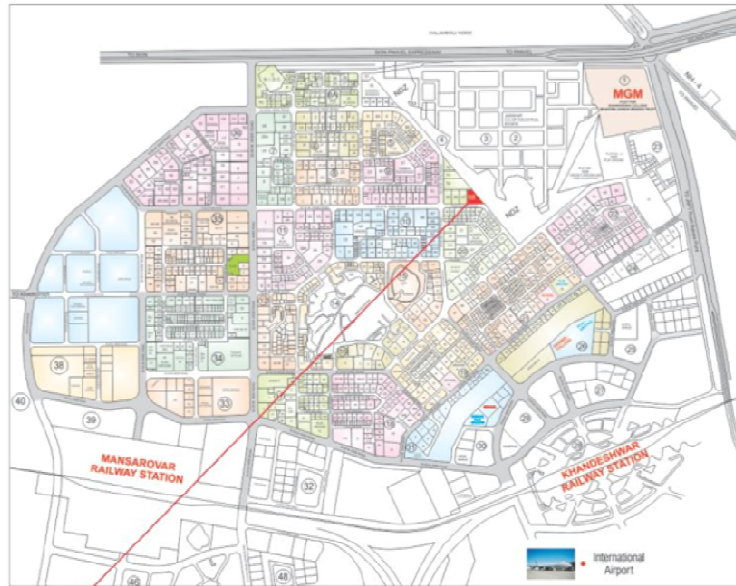


*Deermaa Paradise*  
Koramangala - Kavi Manjunani

2BHK Flat



LOCATION MAP



Current Project



**Veerma Paradise**  
Kamothe - Navi Mumbai

Ongoing Project



**VUB Paradise**  
Kharghar - Navi Mumbai

Completed Project



**Maa Kamal**  
Kurla - Mumbai

Ongoing Project



**The Landmark**  
Jaipur

Completed Project



**Arcade**  
Jaipur

Project by



Site : Plot No. 68, Sector - 20, Kamothe, Navi Mumbai. | Web : [www.vubrealtors.co.in](http://www.vubrealtors.co.in)

Email : [riteshs@vubrealtors.co.in](mailto:riteshs@vubrealtors.co.in) / [vubrealtors@vubrealtors.co.in](mailto:vubrealtors@vubrealtors.co.in)

Contact : 98211 30069

Architect | SATISH AHUJA    RCC Consultant | EPICONS CONSULTANTS PVT. LTD.

This communication is purely conceptual and is not a legal offering. It is made for only promotional purposes. The information contained in this communication is only indicative of the kind of development that is proposed and is subject to change. The developers reserve the right to make change or alterations at their sole discretion.